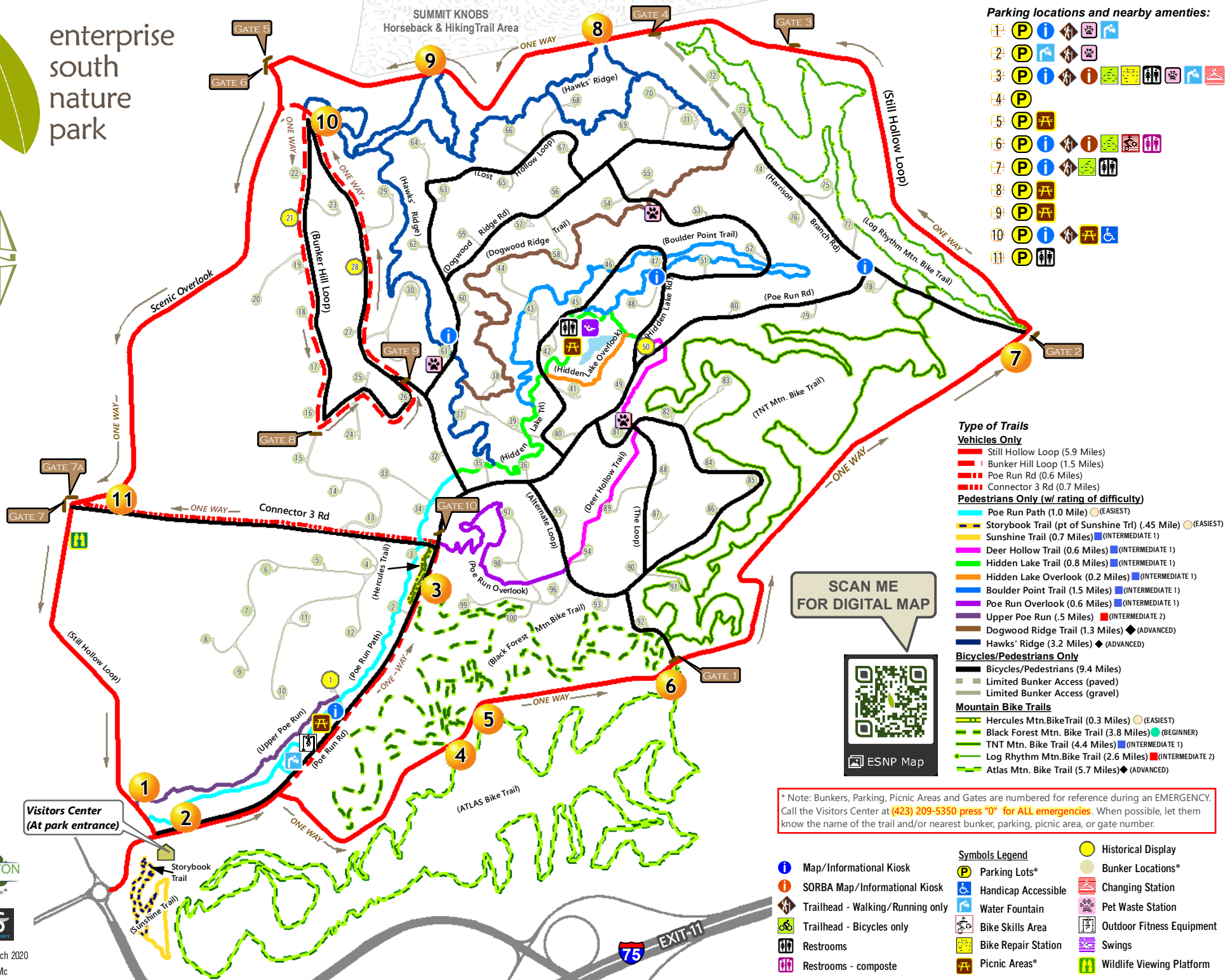




# enterprise south nature park



### Parking locations and nearby amenities:

- 1 P i ♿
- 2 P i ♿
- 3 P i ♿
- 4 P
- 5 P ♿
- 6 P i ♿
- 7 P i ♿
- 8 P ♿
- 9 P ♿
- 10 P i ♿ ♿
- 11 P i ♿ ♿

### Type of Trails

- Vehicles Only**
- Still Hollow Loop (5.9 Miles)
  - Bunker Hill Loop (1.5 Miles)
  - Poe Run Rd (0.6 Miles)
  - Connector 3 Rd (0.7 Miles)
- Pedestrians Only (w/ rating of difficulty)**
- Poe Run Path (1.0 Mile) (EASIEST)
  - Storybook Trail (pt of Sunshine Trl) (.45 Mile) (EASIEST)
  - Sunshine Trail (0.7 Miles) (INTERMEDIATE 1)
  - Deer Hollow Trail (0.6 Miles) (INTERMEDIATE 1)
  - Hidden Lake Trail (0.8 Miles) (INTERMEDIATE 1)
  - Hidden Lake Overlook (0.2 Miles) (INTERMEDIATE 1)
  - Boulder Point Trail (1.5 Miles) (INTERMEDIATE 1)
  - Poe Run Overlook (0.6 Miles) (INTERMEDIATE 2)
  - Upper Poe Run (.5 Miles) (INTERMEDIATE 2)
  - Dogwood Ridge Trail (1.3 Miles) (ADVANCED)
  - Hawks' Ridge (3.2 Miles) (ADVANCED)
- Bicycles/Pedestrians Only**
- Bicycles/Pedestrians (9.4 Miles)
  - Limited Bunker Access (paved)
  - Limited Bunker Access (gravel)
- Mountain Bike Trails**
- Hercules Mtn. Bike Trail (0.3 Miles) (EASIEST)
  - Black Forest Mtn. Bike Trail (3.8 Miles) (BEGINNER)
  - TNT Mtn. Bike Trail (4.4 Miles) (INTERMEDIATE 1)
  - Log Rhythm Mtn. Bike Trail (2.6 Miles) (INTERMEDIATE 2)
  - Atlas Mtn. Bike Trail (5.7 Miles) (ADVANCED)

SCAN ME FOR DIGITAL MAP



ESNP Map

\* Note: Bunkers, Parking, Picnic Areas and Gates are numbered for reference during an EMERGENCY. Call the Visitors Center at (423) 209-5350 press "0" for ALL emergencies. When possible, let them know the name of the trail and/or nearest bunker, parking, picnic area, or gate number.



Updated: March 2020  
Author: KMC

- Symbols Legend**
- Map/Informational Kiosk
  - SORBA Map/Informational Kiosk
  - Trailhead - Walking/Running only
  - Trailhead - Bicycles only
  - Restrooms
  - Restrooms - composte
  - Parking Lots\*
  - Handicap Accessible
  - Water Fountain
  - Bike Skills Area
  - Bike Repair Station
  - Picnic Areas\*
  - Historical Display
  - Bunker Locations\*
  - Changing Station
  - Pet Waste Station
  - Outdoor Fitness Equipment
  - Swings
  - Wildlife Viewing Platform